

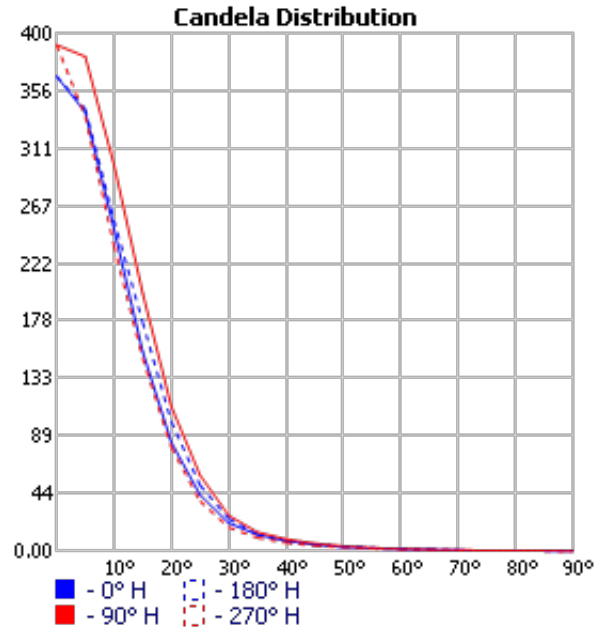
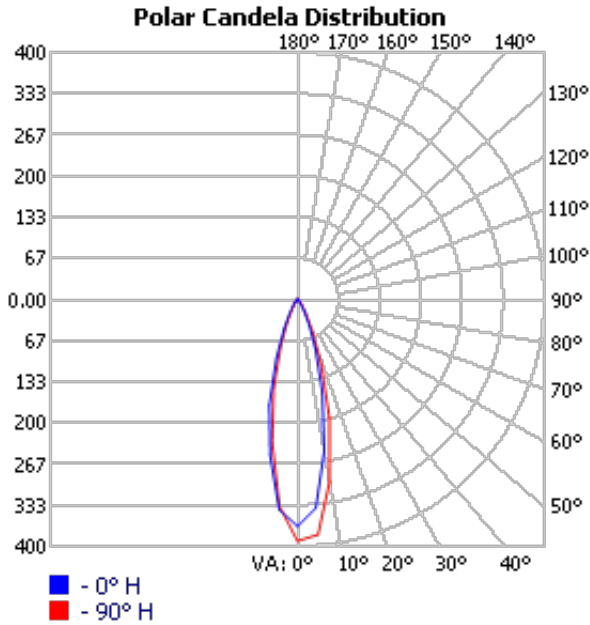
**OUTDOOR PHOTOMETRIC REPORT**

CATALOG: D3003



MANUFACTURER: PRO-LIGHT  
TEST DATE: 2014-7-24  
CATALOG: D3003  
DESCRIPTION: B3103-WW  
LAMP OUTPUT: TOTAL LUMINAIRE LUMENS: 114.5, ABSOLUTE PHOTOMETRY \*  
INPUT WATTAGE: 2.6  
LUMINOUS OPENING: POINT  
MAX CD: 391.1 AT HORIZONTAL: 90°, VERTICAL: 0°  
ROADWAY CLASS: VERY SHORT, TYPE I  
SEE REPORT NOTES \*\*

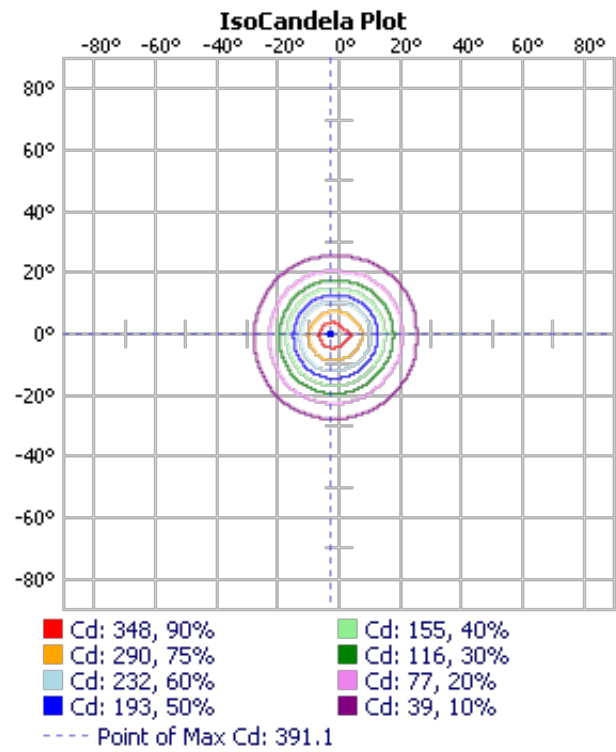
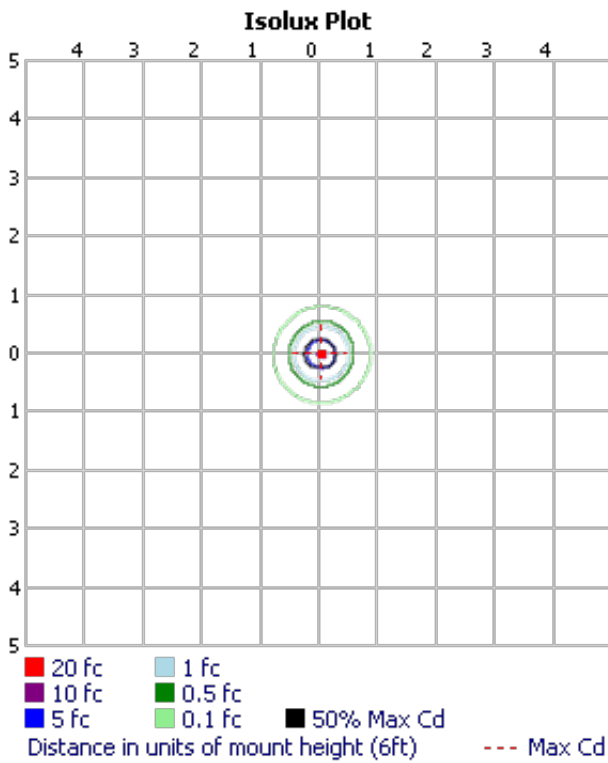
No  
Photo  
Available



\*TEST BASED ON ABSOLUTE PHOTOMETRY WHERE LAMP LUMENS=LUMENS TOTAL.  
\*CUTOFF CLASSIFICATION AND EFFICIENCY CANNOT BE PROPERLY CALCULATED FOR ABSOLUTE PHOTOMETRY.

\*\*FILE DOES NOT INCLUDE SUFFICIENT VERTICAL DATA TO PROPERLY CALCULATE BUG AND LCS UPLIGHT.  
\*\*FILE DOES NOT INCLUDE UPPER HEMISPHERE DATA(90-180) AND HAS CD > 0 AT 90° VERTICAL.

VISUAL PHOTOMETRIC TOOL 1.2.46 COPYRIGHT 2017, ACUITY BRANDS LIGHTING.  
THIS PHOTOMETRIC REPORT HAS BEEN GENERATED USING METHODS RECOMMENDED BY THE IESNA. CALCULATIONS ARE BASED ON PHOTOMETRIC DATA PROVIDED BY THE MANUFACTURER, AND THE ACCURACY OF THIS PHOTOMETRIC REPORT IS DEPENDENT ON THE ACCURACY OF THE DATA PROVIDED. END-USER ENVIRONMENT AND APPLICATION (INCLUDING, BUT NOT LIMITED TO, VOLTAGE VARIATION AND DIRT ACCUMULATION) CAN CAUSE ACTUAL PHOTOMETRIC PERFORMANCE TO DIFFER FROM THE PERFORMANCE CALCULATED USING THE DATA PROVIDED BY THE MANUFACTURER. THIS REPORT IS PROVIDED WITHOUT WARRANTY AS TO ACCURACY, COMPLETENESS, RELIABILITY OR OTHERWISE. IN NO EVENT WILL ACUITY BRANDS LIGHTING BE RESPONSIBLE FOR ANY LOSS RESULTING FROM ANY USE OF THIS REPORT.



**ZONAL LUMEN SUMMARY**

ZONE	LUMENS	% LUMINAIRE
0-30	99.3	86.7%
0-40	107.6	94%
0-60	113.3	99%
60-90	1.2	1%
0-90	114.5	100%

**LUMENS PER ZONE**

ZONE	LUMENS	% TOTAL
0-10	29.6	25.8%
10-20	46.3	40.5%
20-30	23.4	20.4%
30-40	8.3	7.2%
40-50	3.8	3.3%
50-60	1.9	1.7%
60-70	0.9	0.8%
70-80	0.3	0.2%
80-90	0.0	0.0%

**ROADWAY SUMMARY**

DISTRIBUTION: TYPE I, VERY SHORT

MAX CD, 90 DEG VERT: 0.1

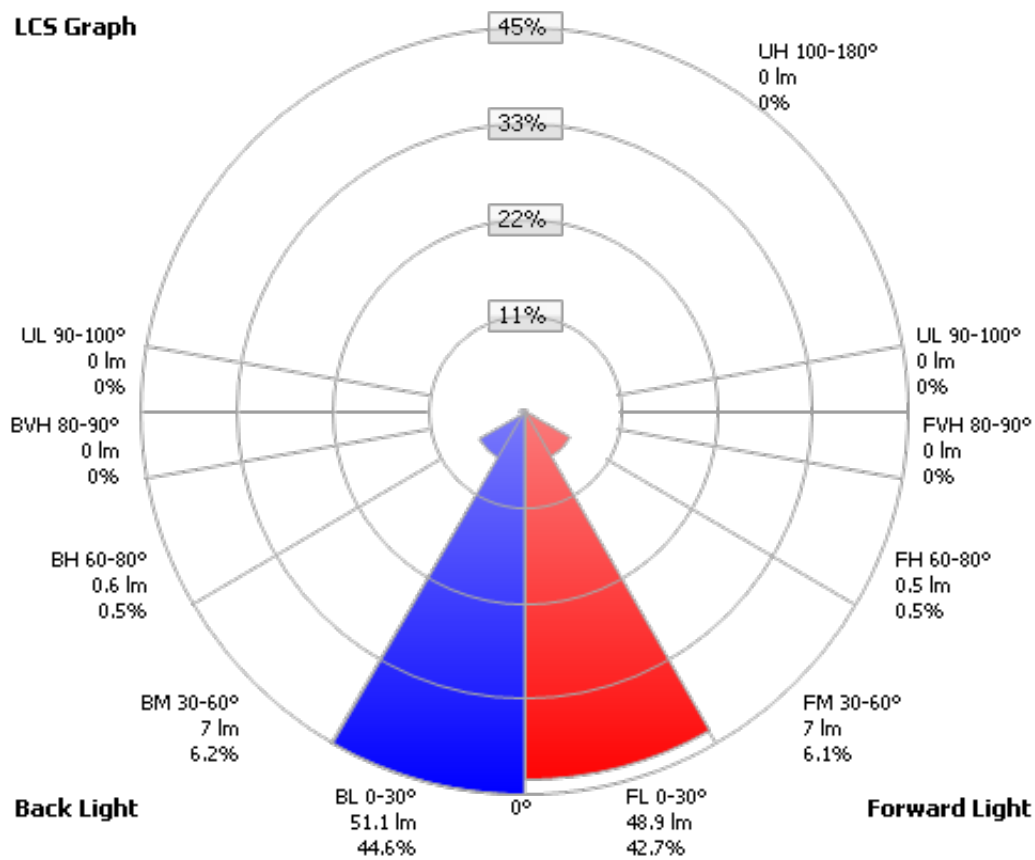
MAX CD, 80 TO <90 DEG: 0.2

	LUMENS	% LAMP
DOWNWARD STREET SIDE:	56.4	49.3%
DOWNWARD HOUSE SIDE:	58.8	51.3%
DOWNWARD TOTAL:	115.2	100.7%
TOTAL LUMENS:	115.2	100.7%

**LCS TABLE**

BUG RATING	B0 - UX - G0	
FORWARD LIGHT	LUMENS	LUMENS %
LOW(0-30):	48.9	42.7%
MEDIUM(30-60):	7.0	6.1%
HIGH(60-80):	0.5	0.5%
VERY HIGH(80-90):	0.009	0%
<b>BACK LIGHT</b>		
LOW(0-30):	51.1	44.6%
MEDIUM(30-60):	7.0	6.2%
HIGH(60-80):	0.6	0.5%
VERY HIGH(80-90):	0.0	0%
<b>TRAPPED LIGHT:</b>	0.000	0%

**LCS Graph**



Scale = Max LCS %

Trapped Light: 0lm, 0%

**CANDELA TABLE - TYPE C**

	0	45	90	135	180	225	270	315	360
0	367	370	391	365	367	370	391	365	367
5	339	363	382	359	342	325	336	322	339
10	249	275	299	290	256	238	236	234	249
15	154	186	199	198	177	149	149	149	154
20	84	102	112	116	100	79	80	82	84
25	43	50	59	60	51	40	38	39	43
30	21	23	27	29	25	17	18	19	21
35	13	13	14	14	12	9	10	11	13
40	7.66	8.18	9	8.18	6.92	5.87	6.19	6.71	7.66
45	4.82	5.14	5.77	5.45	4.61	3.88	3.99	4.19	4.82
50	2.94	3.46	3.67	3.46	3.15	2.62	2.73	2.73	2.94
55	1.89	2.31	2.31	2.31	2.2	1.89	1.78	1.89	1.89
60	1.26	1.47	1.47	1.68	1.57	1.26	1.05	1.26	1.26
65	0.84	0.94	0.94	1.05	0.94	0.73	0.73	0.73	0.84
70	0.42	0.52	0.52	0.63	0.52	0.32	0.42	0.42	0.42
75	0.11	0.32	0.32	0.32	0.21	0.21	0.11	0.21	0.11
80	0.11	0.11	0	0.11	0.21	0	0.11	0	0.11
85	0	0.11	0.11	0.11	0	0	0	0	0
90	-0.11	0	-0.11	0	0	0.11	-0.11	-0.11	-0.11