

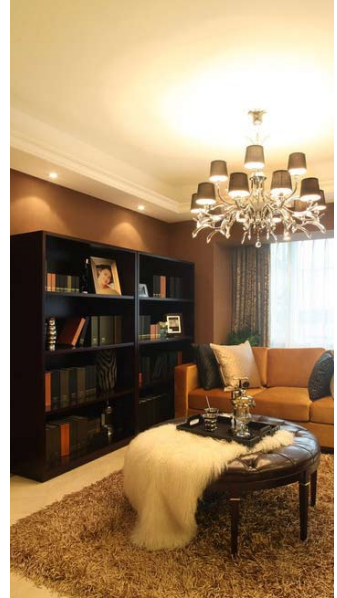
Super Slim LED Power Supply

CV Version



Reliable Technical Data

- Rated Input Voltage:200-240VAC
- Input Frequency:50Hz
- Output Power:60W
- Body:PC
- Open Circuit;Short Circuit;Over Load;
- Over Heat Protection



- Safety According to EN61347-1,EN61347-2-13
- EMI According to EN55015
- EMF According to EN62493-2010
- EMS According to EN61000-3-2;EN61000-3-3;EN61547
- Approbation Mark:CE ROHS;TUV;C-Tick

CC Version



Dimension in mm



Characteristics

Rated input voltage: AC200-240V 50Hz (power factor measured at AC230V and full load)

Model No.	Constant out voltage	Load	Max output Current	PF	Ta	Tc	LxWxH	Approval
SNP60-12VF	12V	0-60W	5.0A	≥0.9	45°C	85°C	185X63.5X22	TUV pending
SNP60-24VF	24V	0-60W	2.5A	≥0.9	45°C	85°C	185X63.5X22	TUV pending

Model No.	Constant output Current	Load	Max output Voltaget	PF	Ta	Tc	LxWxH	Approval
SNP60-500IF	500mA	30-60W	120VDC	≥0.9	45°C	85°C	185X63.5X22	TUV pending
SNP60-700IF	700mA	30-60W	85.7VDC	≥0.9	45°C	85°C	185X63.5X22	TUV pending
SNP60-1050IF	1050mA	30-60W	57.1VDC	≥0.9	45°C	85°C	185X63.5X22	TUV pending
SNP60-1400IF	1400mA	30-60W	42.8VDC	≥0.9	45°C	85°C	185X63.5X22	TUV pending
SNP60-2100IF	2100mA	30-60W	28.5VDC	≥0.9	45°C	85°C	185X63.5X22	TUV pending